



PS

**CONVINCE
YOURSELF**

Best solutions for livestock equipment



EuroTier[®]
First in animal farming.

13 – 16 November 2018 | Hanover, Germany
Hall 17 Booth E30

CONVINCE YOURSELF

PS-System GmbH presents new products of their Home Brand PSS

This year PS-System exhibits for the first time at the EuroTier 2018 in Hannover, Germany with an own booth. From 13. to 16. November 2018 we present our new developments of our home brand PSS.

Therefore we revised and updated all of our components for the auger and chain feeding system, in order that we will bring to the market at the beginning of 2019 two complete new systems. The new feeding systems PSS-Auger and the PSS-Chain will be equipped just with components from our in-house production. But at the same time these new components will be still combinable with our well-known existing brand quality components. So in 2019 you can choose if you want to use the existing components, our new PSS components or a combination of both systems. We can offer you a wide range of components for maximal flexibility.

Also new is the colour design of all of our plastic parts. For the future we will produce all parts from our home brand PSS in neutral black colour, which will be combinable with all different corporate colours. Certainly we could also produce these parts in your corporate colours for a specific purchase quantity. According to your request.

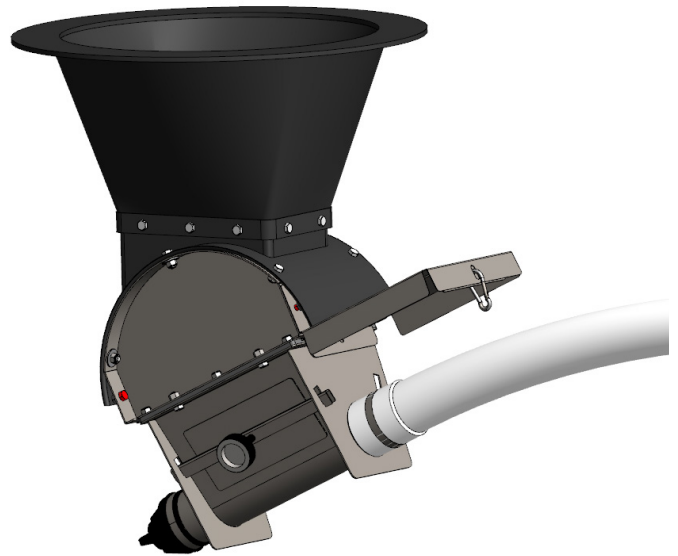
PS
System

PS-System GmbH | Gewerbering 8 | D-49451 Holdorf | www.ps-system.net

Look forward to following highlights which we will present at the EuroTier in Hannover:

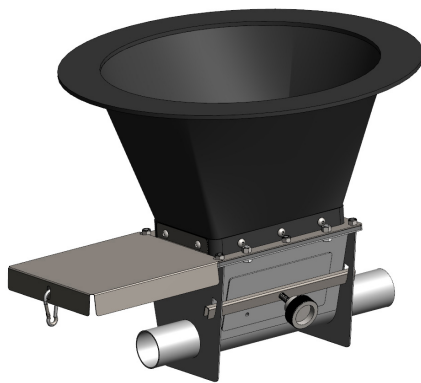
PSS-FEED INTAKE BOOT

Made of 2 mm stainless steel, completely redesigned and updated plus a new upper boot which is available with a new half moon transfer assembly for a stepless angle adjustment from 0-40°. That is our new PSS-Feed Intake Boot. At the beginning of 2019 it will be available for the PSS-Auger model 55, 75 and 90 mm. During the development we take care for a easy installation under the silo as well as the high quality for a competitive price. The PSS-Feed Intake Boot is combinable with the transfer assembly 0-40° or with the transfer assembly 0°, even so it is combinable with the existing upper boot 15° and transfer assembly 15°.



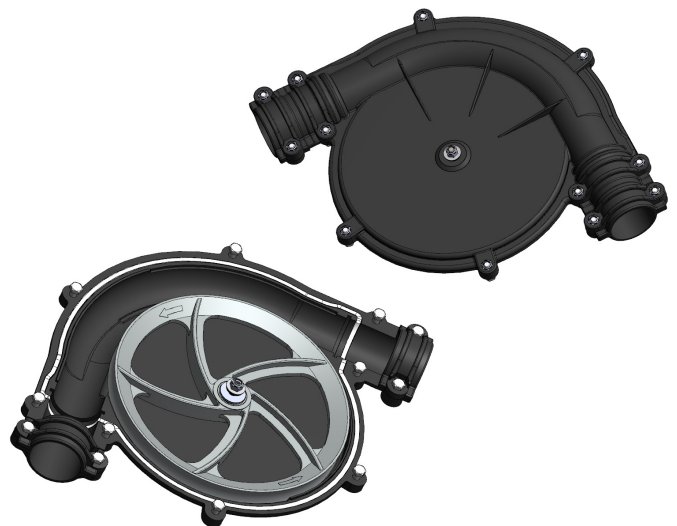
PSS-FEED INTAKE BOOT for chain feeding system

Our new stainless steel feed intake boot is not just useable for our auger systems. It is also suitable for our chain feeding system. Especially designed for a 60 mm chain feeding system, it is combinable with the new upper boot and the transfer assembly 0° and perfectly dispense the feed into the chain feeding system. In this way you get a favourable and high-quality alternative to the standard feed intake stations single.



PSS-DEFLECTION ANGLE 90°

Also we redeveloped our deflection angles completely. Our development takes care for a smooth surface to have a easy to clean casing for a optimal hygiene. Although we make sure that the new PSS-Deflection Angle have a very good solidity to resist the high forces from long system lengths. The optional usable seal kit (for deflection angles used outdoors) as well as the choosable fibreglass-reinforced wheel or the cast iron wheel are still available for the new PSS-Deflection Angle 90°.



Beside these novelties you can look forward to further new products like our redesigned PSS-Drive-Station, the PSS-Feed Drop, PSS-Volume Dispenser as well as new stainless steel elbows 45° for our PSS-Auger System.

CONVINCE YOURSELF from our new high-quality products of our home brand PSS and visit our booth from 13. to 16. November 2018 at the EuroTier in Hannover, Germany. You will find us in Hall 17, booth E30. We are glad to meet you at the EuroTier 2018!

